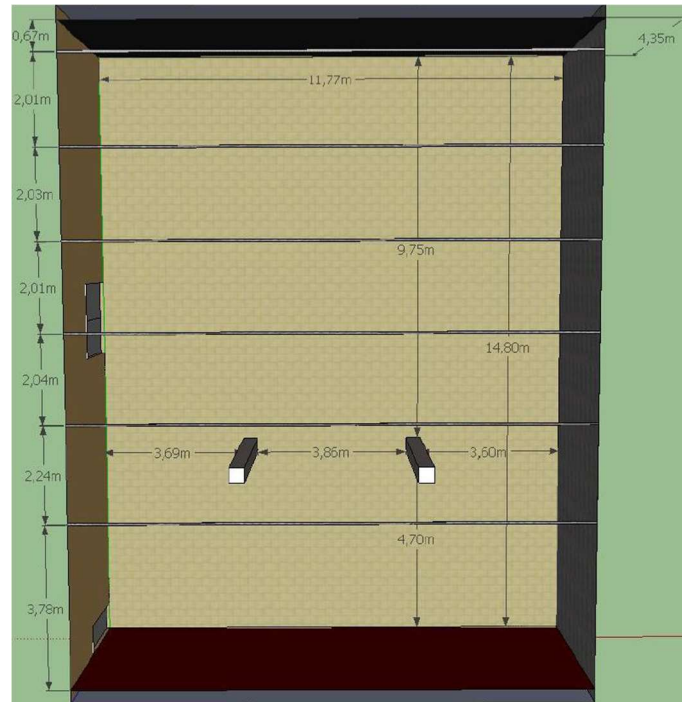


Technische fiche

Plan

Afmetingen: 14m80 x 11m77

Hoogte 4m35

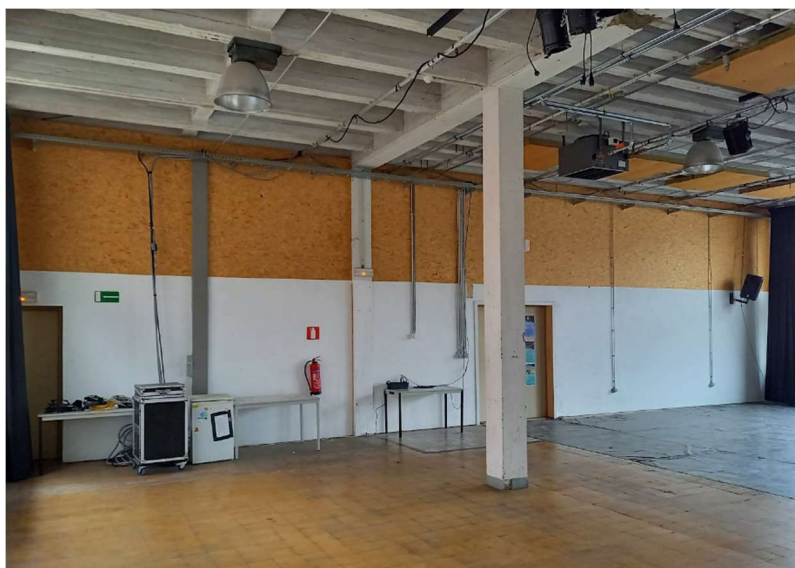
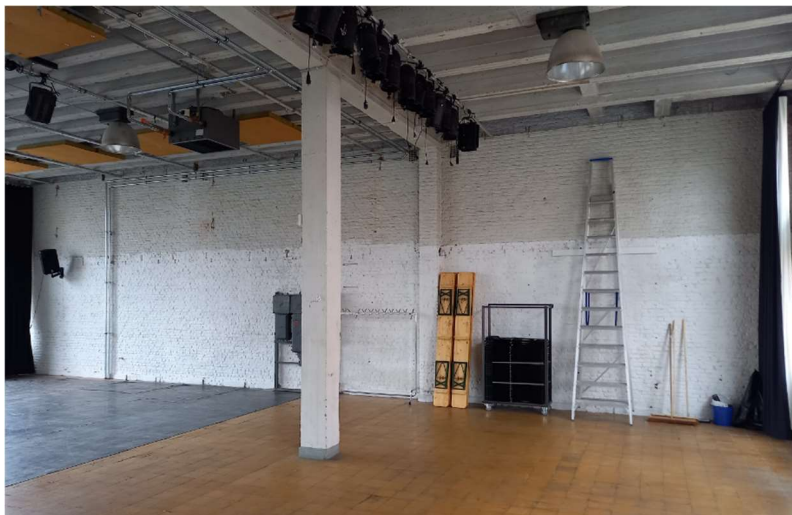
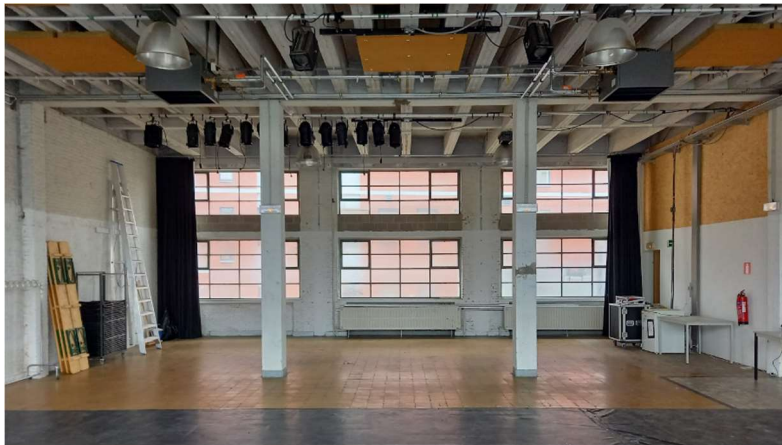


Foto's

Op het einde van elke residentie dient de ruimte achtergelaten te worden zoals op de foto's hieronder.

Gelieve bij aanvang van de residentie te checken of de ruimte er uit ziet zoals op de foto's hieronder. Indien dit niet het geval is (extra meubilair/materiaal, ontbrekend technisch materiaal of niet op zijn plaats, ...) dien je dit door te geven aan je contact.





Inventaris

Licht:

Het volgende materiaal is ter beschikking in Casco, maar niet geïnstalleerd. Dit dien je zelf te doen. Op het einde van de residentie moet alles terug op zijn oorspronkelijke plaats gehangen worden (zie foto's)

- 11 par CP 62
- 4 PC 1000W
- Dimmer 18 kanaals
- Lichttafel ADB Domino
- vast grid (zie plan)

Geluid:

- Yamaha stagepas 600BT

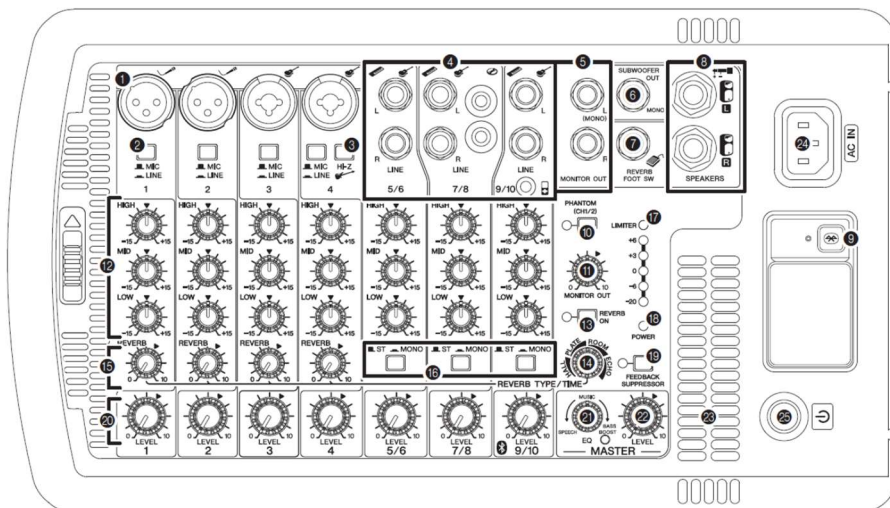
Allerlei:

- koelkast
- 30 klapstoelen
- 4 bierbanken
- 3 tafels
- 1 ladder
- Zwarte dansvloer (geen verende vloer)
- werkverlichting HQI
- stroomaansluiting CEE 3x63A 400V
- gordijnen voor verduistering

Beschikbaar op aanvraag

- projector Epson EB-L200F
- 2 draadloze micro's

Controls and Functions



1 Mic/Line input jacks (channels 1-4)

Connect microphones, guitars, electronic musical instruments or audio equipment. Channels 3 and 4 provide combo jacks that support both XLR and phone plugs.



2 MIC/LINE switches (channels 1-4)

For low-level signals (including microphones), set the switch to the MIC (M) position. For high-level signals (including electronic instruments and audio equipment), set the switch to the LINE (L) position.

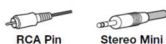
8 STAGEPAS 600BT/STAGEPAS 400BT Owner's Manual

3 Hi-Z switch (channel 4)

This switch is used when connecting a device directly to the mixer without a DI (direct box) — for example, instruments with passive pickups, such as an acoustic-electric guitar or electric bass without a battery. This function is effective only for the phone jack input.

4 Line (stereo) input jacks STAGEPAS 600BT (channels 5/6, 7/8, 9/10) STAGEPAS 400BT (channels 5/6, 7/8)

Connect line-level devices such as electronic instruments, acoustic-electric guitars, CD players, and portable audio players. These jacks support phone, RCA-pin, and stereo-mini plugs.



NOTE

For the channel 7/8 input (STAGEPAS 600BT), or for the channel 5/6 input (STAGEPAS 400BT), if both phone and RCA-pin jacks are used at the same time, the phone jack will take priority. For the channel 9/10 input (STAGEPAS 600BT), or the channel 7/8 (STAGEPAS 400BT), if both phone and stereo mini jacks are used at the same time, the stereo mini jack will take priority. The signal from the device connected to another jack will be muted. The signals from the Bluetooth device specified by the Bluetooth button 9 are always mixed to channels 9/10 (STAGEPAS 600BT) or channels 7/8 (STAGEPAS 400BT).

5 MONITOR OUT jacks

These connect to powered speakers for monitoring purposes, and output a mix of the signals from channels 1 to 9/10 (STAGEPAS 600BT) or channels 1 to 7/8 (STAGEPAS 400BT). You can adjust the output level using the MONITOR OUT control 11. If only the L (MONO) jack is used, the signals from the L and R channels are mixed and output.

6 SUBWOOFER OUT jack

This connects to a powered subwoofer, and outputs a mono signal. If this jack is in use, the low frequencies below 120Hz to the SPEAKERS L/R jacks will be cut. The output level is linked to that of the MASTER LEVEL control 22.

7 REVERB FOOT SW jack

This connects to an unlatched-type footswitch, such as the Yamaha FC5. This can be useful for solo performers, since you can toggle the reverb on and off as needed with your foot.

8 SPEAKERS L/R jacks

Use the included speaker cables to connect the dedicated speakers.

9 Bluetooth button/LED

This button switches the Bluetooth function on or off. It is also used to pair (register) a Bluetooth device (page 15). The Bluetooth LED indicates the following status:

LED	Status
Off	Bluetooth off
Lit steadily	Bluetooth connected
Flashing slowly	Waiting for Bluetooth connection
Flashing fast	Pairing a Bluetooth device

NOTE

The STAGEPAS enables you to pair (register) up to eight Bluetooth devices. Once the ninth Bluetooth device has been paired successfully, the pairing information for the Bluetooth device that was connected earliest will be deleted.

10 PHANTOM (CH1/2) switch /LED

When this switch is on, the LED lights up, indicating that phantom power is available for channels 1 and 2. Turn this switch on to supply power to condenser microphones or a DI (direct box).

Notice

Follow the important precautions below to prevent noise and possible damage to external devices and the unit when you operate this switch.

- Be sure to leave this switch off if you do not need phantom power, or when you connect a device that does not support phantom power to channels 1 or 2.
- Do not connect/disconnect a cable to/from channels 1 and 2 while this switch is on.
- Turn the LEVEL control of the channels 1 and 2 to the minimum before operating this switch.

11 MONITOR OUT control

Determines the signal level output from the MONITOR OUT jacks 5. The MASTER LEVEL control does not affect the MONITOR OUT signal.

12 Equalizer controls (HIGH, MID*, LOW) *Only for STAGEPAS 600BT

This three-band equalizer adjusts the channel's high, mid*, and low frequency bands. Setting the control to the "V" position produces a flat response in the corresponding band. Turning the control clockwise boosts the selected band. If you start getting feedback, turn the control back slightly.

13 REVERB switch/LED

When this switch is on, the LED lights up, indicating that you can apply reverb. This switch is off when you turn on the unit. (Unlike other switches, this switch cannot be locked.)

Controls and Functions

- 14 REVERB TYPE/TIME control**
Determines the reverb type and length. Turning the control to the right lengthens the time of the selected reverb type.
HALL: Simulated reverb of a large space, such as a concert hall.
PLATE: Simulated metal plate reverb, producing a more hard-edged and bright sound.
ROOM: Simulated acoustic ambience of a small room.
ECHO: Echo effect suitable for vocals.
- 15 REVERB controls (channels 1-4)**
Determines the amount of reverb for each channel when the REVERB switch **16** is on.
- 16 ST/MONO switches**
STAGEPAS 600BT (channels 5/6, 7/8, 9/10)
STAGEPAS 400BT (channels 5/6, 7/8)
Setting the switch to ST (STEREO) (■) will assign the signals from the L and R channels to each left and right speaker and output each signal. Setting the switch to MONO (▲) will mix the output of different L and R sources to output the same signal to both the left and right speakers. For keyboards with mono output, guitars, or other non-stereo sound sources, when the switch is set to MONO (▲), the stereo input jacks can be conveniently used as multiple mono jacks.
- 17 LEVEL meter**
The LEVEL meter shows the level of output signal from the SPEAKERS L/R jacks.
Notice
If the unit is operated at a sufficiently high volume to make the LIMITER LED flashes continuously, the internal power amplifier section is being excessively overloaded and may malfunction. Reduce the output level with the MASTER LEVEL control so that the indicator flashes only briefly on the highest transient peaks.
- 18 POWER LED**
This LED lights when the power is turned on by pressing the power switch.
- 19 FEEDBACK SUPPRESSOR switch/LED**
When this switch is on, the LED lights up, indicating that feedback is automatically suppressed. (This configuration utilizes a seven-band notch filter. When this switch or the power switch is off, the notch filter will be reset.)
- 20 LEVEL controls**
Use these controls to adjust the volume for each channel. To reduce noise, set any LEVEL controls on unused channels to the minimum.

- 21 MASTER EQ (equalizer) control**
Use this control to adjust the overall sound frequency balance. The center position "MUSIC" is a basic setting. If you turn the control counterclockwise, it will create an optimum setting for speech, cutting unneeded low range frequencies. If you turn the control clockwise, it will create an optimum setting for playback of sound sources, since the low range is boosted. If you turn the control further clockwise, the LED will light up, indicating that the bass boost function turns on, giving you an even more powerful bass tone.
- 22 MASTER LEVEL control**
Determines the volume of the signal output from the SPEAKERS L/R jacks. This allows you to adjust the overall volume without changing the relative volume balance among the various channels.
- 23 Vents**
These are the vents for the cooling fan inside the mixer. Do not block the vents when in use.
- 24 AC IN jack**
Connect the included power cord here.
- 25 ⏻ (power) switch**
For turning the power of the mixer on (▲) and off (■).
NOTE
Rapidly turning the unit on and off in succession may cause it to malfunction. After turning the unit off, wait for about 5 seconds before turning it on again.

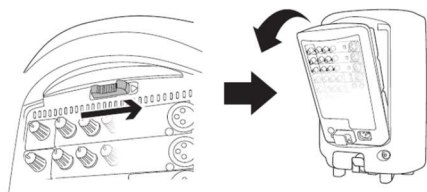
10 STAGEPAS 600BT/STAGEPAS 400BT Owner's Manual

Quick Start Guide

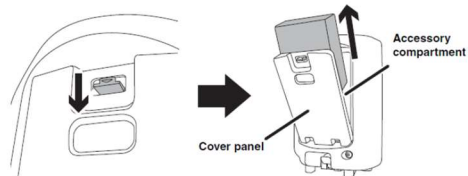
Quick Start Guide

Connecting the speakers and the mixer

- Slide the mixer's lock in the direction of the arrow (shown below), and then remove it from the speaker.



- Open the cover panel attached to the other speaker, and then remove the box from inside the accessory compartment. Two speaker cables and one power cord are included in the box.

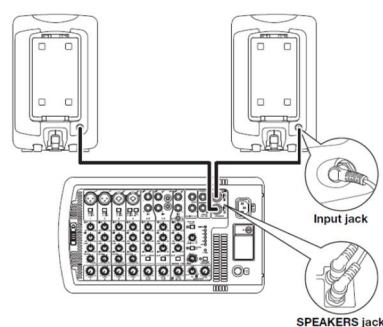


NOTE

After the box is removed, loose items, such as the included power cord, speaker cables, and an optional microphone can be conveniently stored in the accessory compartment.

- Connect the speakers and the mixer.

Connect the mixer's SPEAKERS jacks (red) to the speakers' input jacks (red) using the included speaker cables. As shown in the illustration below, be sure to insert the speaker cables all the way inside until secure.



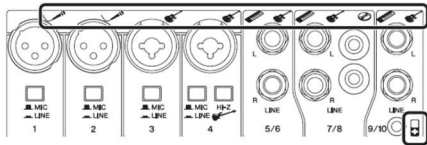
Notice

Use only the included speaker cables. Use of other cables may result in heat generation, or short circuiting.

Connecting microphones, instruments, and audio devices to the mixer

4. Connect desired devices, such as a microphone, or an instrument to the input jack of the mixer.

Refer to the illustration on the mixer shown below or the connection example of the cover panel of the accessory compartment.



Getting sound out of the system

5. Connect the included power cord as described in the steps below: Before connecting the power cord, make sure that the power to the STAGEPAS is turned off.
 - 5-1 Connect the plug on the included power cord to the AC IN jack on the rear panel of the unit.



- 5-2 Connect the other end of the power cord to a power outlet.

NOTE

To disconnect the power cord, reverse these steps.

12 STAGEPAS 600BT/STAGEPAS 400BT Owner's Manual



Warning

The STAGEPAS has been designed for grounded use. To avoid electrical shock and damage to devices, be sure to ground the unit using the included power cord. If you have any questions regarding connections, contact your nearest Yamaha dealer.



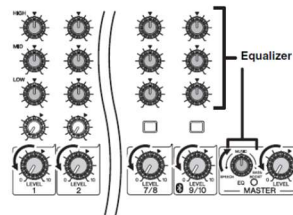
Warning

Use only the included power cord. Otherwise, heat may be generated or electrical shock may be caused.

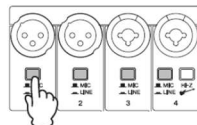
Notice

Even when the power switch is turned off, a minimal amount of electric current is still flowing to the unit. If you plan not to use the unit for an extended period of time, be sure to unplug the power cord from the AC outlet.

6. Turn the mixer's LEVEL controls (white knobs) and MASTER LEVEL control (red knob) to the minimum (zero). Also, set the equalizer controls (green knobs) to the center "▼" or "MUSIC" position.

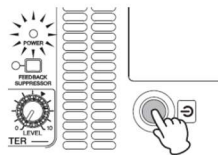


7. Set the MIC/LINE switch to the MIC (M) position to connect a microphone, and to the LINE (L) position to connect a musical instrument or audio device.

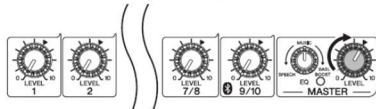


8. Turn on the power of the connected sound source (if applicable), then the mixer.

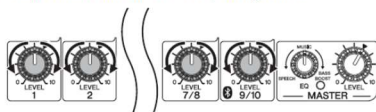
The POWER LED lights.



9. Set the MASTER LEVEL control to the "▼" position.



10. While playing your instrument or singing into the microphone, use the LEVEL control to adjust the volume of the corresponding channel.



11. Use the MASTER LEVEL control to adjust the overall volume.

If you hear the sound and the volume seems appropriate, setup is complete. If not, please refer to the checklist in the "Troubleshooting" section.

NOTE

To avoid loud, unexpected noise from the speaker, first turn off the power to the mixer, then the connected sound source (such as a musical instrument or audio device).

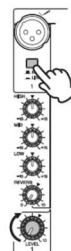
Adjusting the volume

• When the volume is too loud

Turn the LEVEL control to the minimum (zero). Set the MIC/LINE switch to the LINE (L) position, then slowly raise the LEVEL control until the desired volume is reached.

• When the volume is too soft

Turn the LEVEL control to the minimum (zero). Set the MIC/LINE switch to the MIC (M) position, then slowly raise the LEVEL control until the desired volume is reached.



Applying Reverb

The STAGEPAS features a built-in reverb processor that is in the same league as our famed SPX effect processor series. This reverb lets you simulate the acoustics of different performance environments, such as concert halls and small clubs, and add a warm, natural ambience to your vocals or instrumental performance. The following reverb types are included:

Type	Description
HALL	Simulated reverb of a large space, such as a concert hall. Suitable for acoustic guitars, strings, woodwind instruments, etc.
PLATE	Simulated metal plate reverb. Adds bright reverb to vocals.
ROOM	Simulated acoustic ambience of a small space. Suitable for percussive instruments with a strong attack.
ECHO	Articulated echo effect suitable for vocals.

1. Press down the REVERB switch to turn it on.
The LED lights when REVERB is on.



2. Position the REVERB TYPE/TIME control to the desired reverb type and time (length).
Turning the control to the right lengthens the time of the selected reverb type.



3. Use the REVERB control to adjust the reverb amount of the corresponding channel.
If necessary, repeat steps 2 and 3 to determine the optimum reverb setting.



Using a Bluetooth® device

You can use the STAGEPAS to play audio files stored in Bluetooth devices, such as a mobile device.

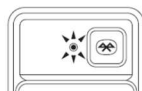
Pairing a Bluetooth® device

Before you can connect a Bluetooth device for the first time, you need to "pair" the device. "Pairing" refers to registering a Bluetooth device to another Bluetooth device. Once pairing is complete, you will be able to reconnect those devices easily after you terminate a Bluetooth connection.

1. Make sure that the Bluetooth LED is turned off. If the LED is lit steadily or flashing, press the Bluetooth button to switch off the Bluetooth function.
2. Press and hold down the Bluetooth button for three seconds or longer.
The Bluetooth LED will flash rapidly, indicating that the unit is ready for pairing.



3. Turn on the Bluetooth function on the Bluetooth device that you want to pair.
For more information, refer to the owner's manual for the Bluetooth device.
4. Once the Bluetooth device displays a list of other Bluetooth devices that are available for connection, select STAGEPAS 600BT or STAGEPAS 400BT.
When the pairing process is complete, the Bluetooth connection will be established and the Bluetooth LED will light up.



NOTE

- The STAGEPAS enables you to pair (register) up to eight Bluetooth devices. Once the ninth Bluetooth device has been paired successfully, the pairing information for the Bluetooth device that was connected earliest will be deleted.
- You must complete the pairing process on the Bluetooth device within two minutes.

Connecting a Bluetooth® device

1. Press and hold down the Bluetooth button for one second.
The Bluetooth LED will flash slowly, indicating that the unit is ready for connection.
2. Turn on the Bluetooth function on the Bluetooth device that you want to connect.
Select STAGEPAS 600BT or STAGEPAS 400BT from the list of Bluetooth devices displayed on your Bluetooth device. When the connection is made, the Bluetooth LED will light up.

Playing audio files stored in a Bluetooth® device

Play an audio file on your Bluetooth device.

Signals from the Bluetooth device are input to channels 9/10 (STAGEPAS 600BT) or channels 7/8 (STAGEPAS 400BT). We recommend that you set the volume on the Bluetooth device a little higher than normal, and then adjust the volume for each channel using the LEVEL controls.

If you receive a call or text message while playing audio files on your Bluetooth device such as a smartphone, the audio file playback might be paused momentarily. To avoid this interruption, enable Airplane Mode, and then set Bluetooth to ON on your smartphone.

Disconnecting the Bluetooth® device

To disconnect the Bluetooth device, do one of the following:

- Use the Bluetooth device to disconnect. (The Bluetooth LED on the unit will flash slowly, indicating that the unit is disconnected and waiting for connection.)
- Press the Bluetooth button on the unit to turn off the Bluetooth function. (The Bluetooth LED will turn off.)

Notice

Before you turn off the power to the unit, make sure that the Bluetooth function is turned off (The Bluetooth LED is turned off). If you turn off the power to the unit while the Bluetooth function remains enabled, the unit might lose the pairing information.

NOTE

After turning the Bluetooth function off, wait for at least 6 seconds before turning it on again. The Bluetooth function will not turn on even if you press the Bluetooth button immediately after you turn the function off.

Troubleshooting

Troubleshooting

Power does not turn on.

- ☐ Did you firmly and securely connect the power cord?

Power shuts down suddenly.

- ☐ Are the vents of the mixer blocked?

Since inadequate ventilation can result in overheating the mixer, the power may be turned off automatically to protect the system from overheating. Arrange the ventilation for cooling, then turn on the power again.

No sound is heard.

- ☐ Did you connect the mixer's SPEAKERS jacks and the speakers' input jacks using the proper speaker cables?
- ☐ Did you firmly and securely connect the speaker cables?

- ☐ Is a speaker other than the included speaker connected to the mixer's SPEAKERS jacks?

Please connect the included speaker (STAGEPAS 600BT: MODEL 600S; STAGEPAS 400BT: MODEL 400S).

- ☐ Did you use the included speaker cables?

If you use a commercially-available speaker cable with a metal-housing connector, the cable will be shorted when the connector touches other metal, resulting in no sound being produced.

- ☐ Is the POWER LED flashing at intervals?

There may be a short in the speaker cable or the connection may be faulty. Check that the speaker cable is not scratched and is connected properly to the mixer, then reapply the power.

- ☐ For channels 7/8 (STAGEPAS 600BT) or channels 5/6 (STAGEPAS 400BT), are both phone and RCA-pin jacks connected at the same time?
Or, for channels 9/10 (STAGEPAS 600BT) or channels 7/8 (STAGEPAS 400BT), are both phone and stereo mini jacks connected at the same time?

For channels 7/8 (STAGEPAS 600BT), or channels 5/6 (STAGEPAS 400BT), the phone jack takes priority. For channels 9/10 (STAGEPAS 600BT), or channels 7/8 (STAGEPAS 400BT), the stereo mini jack takes priority.

- ☐ Is the POWER LED flashing continuously?

If the internal power amplifier section is excessively overloaded, the amplifier will be muted for protection. The mixer will automatically reset itself after a while.

Sound is distorted or noise is produced

- ☐ Are the LEVEL controls of all relevant channels and/or the MASTER LEVEL control set too high?

- ☐ Is the MIC/LINE switch of the corresponding channel set to MIC?

If the input level from the source is high, setting the MIC/LINE switch to MIC may result in a distorted sound. Set the switch to LINE position.

- ☐ Is the volume of the connected device too high?

Lower the volume of the external device.

- ☐ Is the speaker cable or the power cord located near the input cables?

Please keep it away from the input cables.

Sound is not loud enough

- ☐ Are the LEVEL controls of all relevant channels and/or the MASTER LEVEL control set too low?

- ☐ Is the MIC/LINE switch of the corresponding channel set to LINE?

Turn the LEVEL control to the minimum (zero). Set the switch to the MIC position, then slowly raise the LEVEL control.

- ☐ Is the volume of the connected device too low?

Raise the volume of the external device.

- ☐ Is the PHANTOM switch set to On when using a microphone that requires phantom power?

The high sounds and low sounds are unbalanced.

- ☐ Are the equalizer controls raised or lowered too much?
Set the equalizer controls to the center position.

- ☐ Is the speaker properly outputting high-frequency range signals?
If not, check the "Protective circuit (poly switch)" note in the Notice section.

Cannot connect Bluetooth / Bluetooth audio sound cuts intermittently

- ☐ The unit may be connected to a different Bluetooth device.
Cut the current Bluetooth connection, and then connect to the desired Bluetooth device.

- ☐ The STAGEPAS may be located too far away from the Bluetooth device.
The maximum distance between the STAGE PAS and a Bluetooth device should be 10 meters. Locate the Bluetooth device closer to the STAGEPAS.

- ☐ Your Bluetooth device may not support the A2DP profile.
Use a Bluetooth device that supports A2DP.

- ☐ The unit may be located in the vicinity of a device that emits electro-magnetic waves at a frequency of 2.4 GHz (such as a wireless microphone transmitter, wireless LAN device, microwave oven, etc).
Locate the STAGEPAS away from any device that emits electro-magnetic waves.

If your Bluetooth device also features a wireless LAN function, turn off the function, and use only the Bluetooth function.

If a problem persists, please contact your Yamaha dealer.